



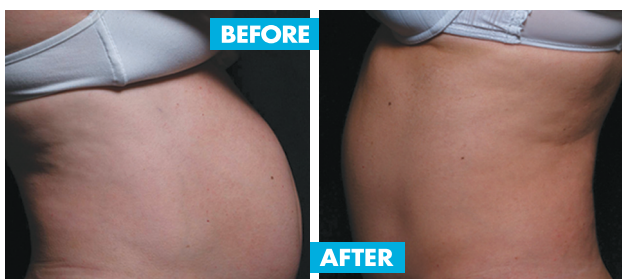
# Postural benefits from **BREAST REDUCTION SURGERY**

While some women have large breasts from a young age, in many others, there is a gradual size increase with repeated pregnancies, weight gain, and /or ageing, causing numerous problems including the difficulty in getting well fitting brassieres and clothes, the attraction of unnecessary comments , the development of chronic back, neck and shoulder pain, deep shoulder grooves and skin rashes between and below the breasts.

Breast reduction surgery involves removal of a small amount of skin, but a much greater reduction of actual breast tissue and fat and the lifting of the nipples and surrounding areola to about the level of the mid-arm.

The surgery restores balance to the patient, improving posture and fitness by the regaining of the ability to exercise without the strain caused by large and droopy breasts.

The Vertical Mammoplasty, initially described by Claude Lassus, improved by Daniel Marchac, popularised by Madeline Lejour and further refined by Elisabeth Hall- Findlay is an excellent technique for breast-reduction.



Actual patient before and after abdominoplasty surgery

## **Plastic Cosmetic & Laser Surgery**

### **Dr Chandran Arianayagam FRCSEd FACCS**

Corresponding Member, American Society of Plastic Surgeons, American Society for Aesthetic Plastic Surgery , American Academy of Cosmetic Surgery, Facial Cosmetic Surgery

- Facial Cosmetic Surgery · Body Contour Surgery · Breast Surgery
- Injections and Fillers · Laser Surgery · Expert Management of Skin Cancers

**“No need to travel far when the person with the experience and expertise to help you achieve the best results is so close to home”**

**Coffs Harbour Suite 3 The Scarba Centre, 18-20 Scarba St**

Grafton **Duke St Medical Centre, 9 Duke St**

Armidale **Rockvale Cardiac Centre - 18 Rockvale Road.**

Tamworth **Barton Lane Medical Practice, 121 Johnston St**

**www.pclscoffsharbour.com.au**  
E info@pclscoffsharbour.com.au

Call or email the team today  
**6651 5611**